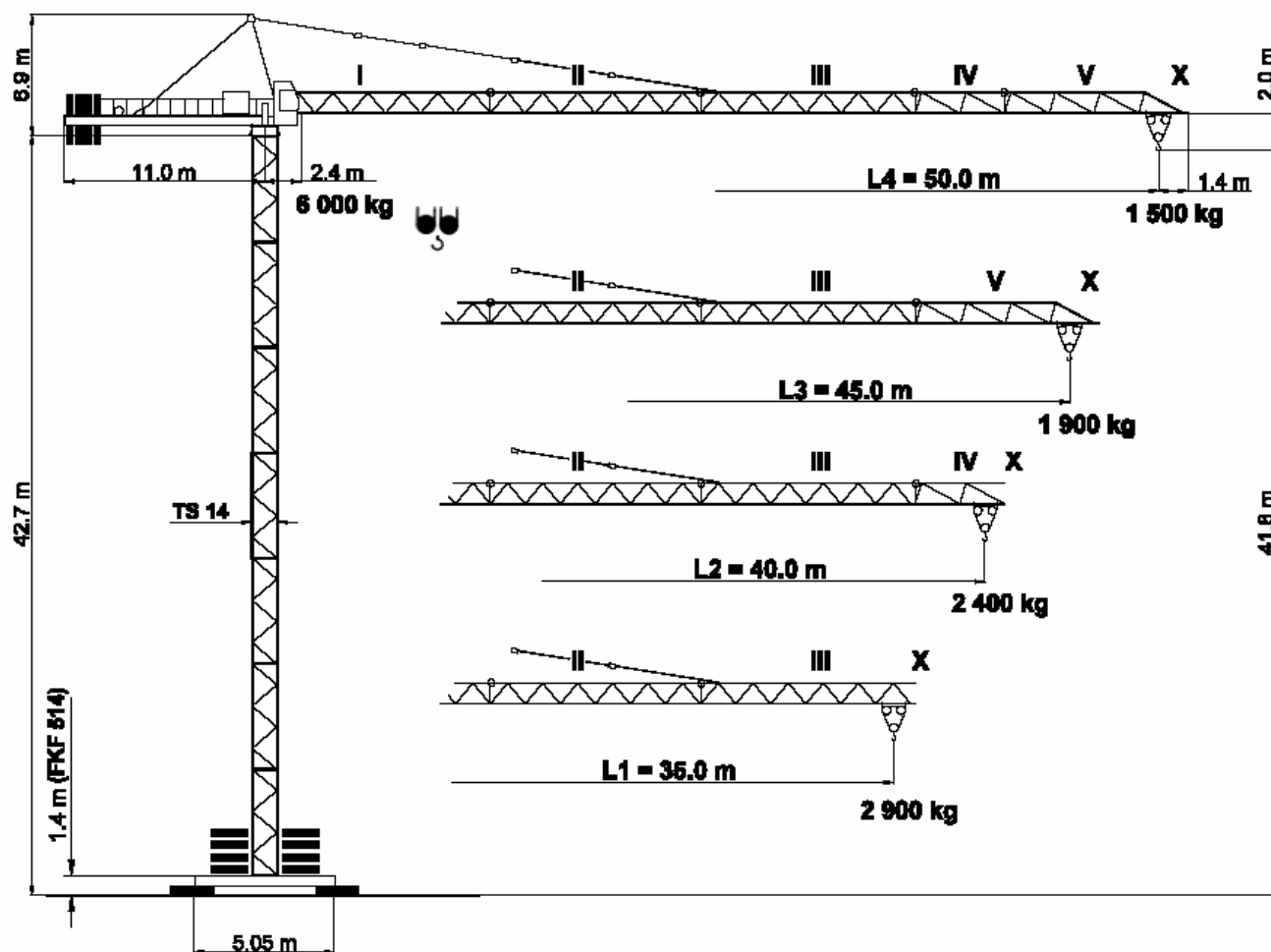


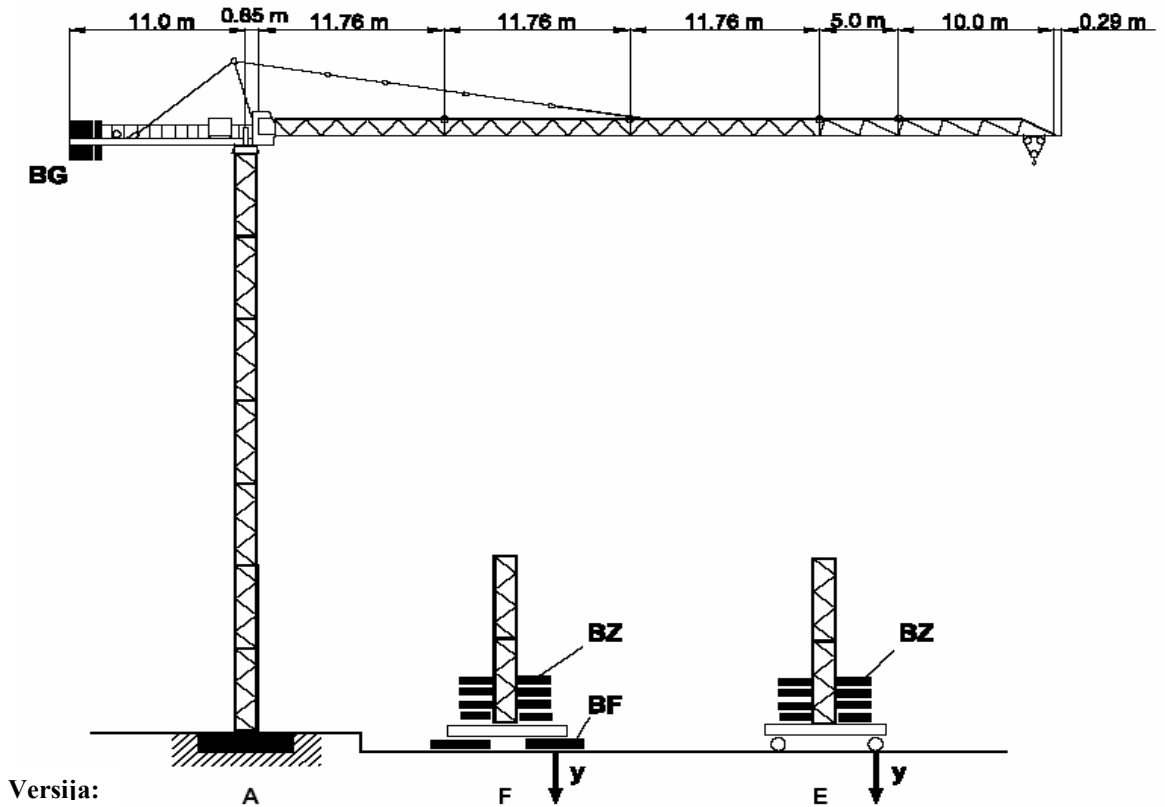
DIN 15018  
BGL 2125  
Keliamoji galia

H1 / B3  
0090  
6.0 t

# PEINER SK 96/1



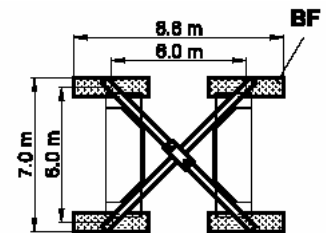
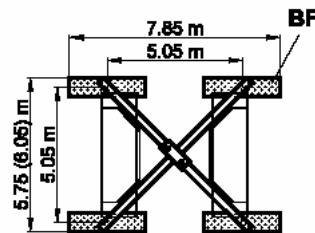
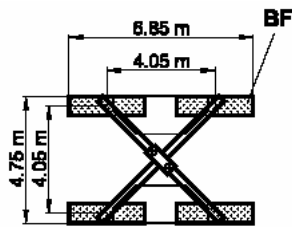
Mūsų atstovas:



**FK 414**

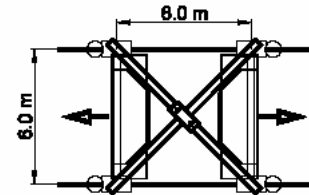
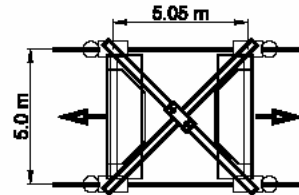
**FK 514 / 519**

**FK 619**



**FKF 514 / 519**

**FKF 619**



Antžeminė atrama

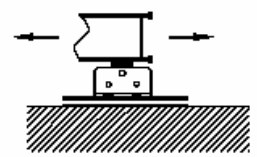
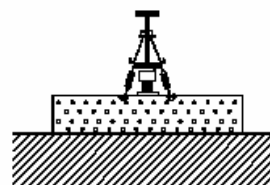
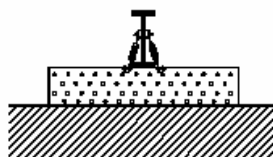
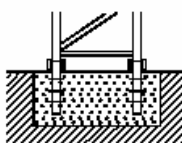
Versija:

A

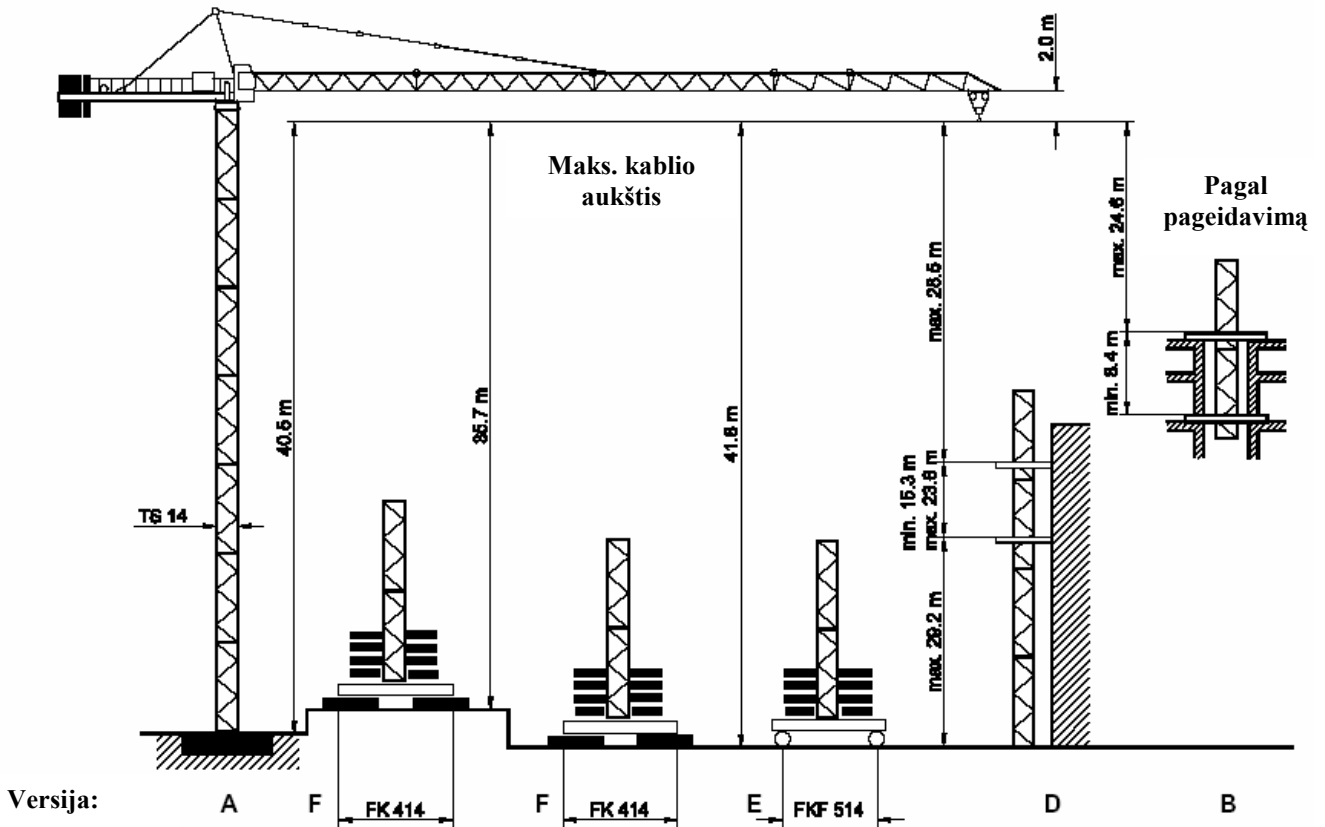
F

F / SP

E



SK 96/1 **Bokštas TS 14**



TS 14		Version A					Version F					Version E				
Bokštas		HK	HK	BZ + BF	y	a.B.	HK	BZ + BF	y	a.B.	Bokštas		BZ	y	a.B.	
TS 14.3	TS 14.4	m	m	t	kN	kN	m	t	kN	kN	TS 14.3	TS 14.4	t	kN	kN	
5.9 m	11.8 m										5.9 m	11.8 m				
1 x TSV 14.3		40.5					41.8	53.0	418	529	2 x TSV 14.3		52.2	457	529	
6 x TS 14.3											5 x TS 14.3					
6 x TS 14.3	3 x TS 14.4	34.6	35.7	70.8	471	501	35.9	43.0	371	402	6 x TS 14.3	3 x TS 14.4	42.2	403	408	
5 x TS 14.3		27.7	29.8	50.8	398	374	30.0	33.0	327	312	5 x TS 14.3		32.2	351	319	
4 x TS 14.3	2 x TS 14.4	22.8	23.9	40.8	352	292	24.1	23.0	284	230	4 x TS 14.3	2 x TS 14.4	22.2	300	236	
3 x TS 14.3		16.9	18.0	30.8	308	263	18.2	23.0	267	226	3 x TS 14.3		22.2	281	232	
2 x TS 14.3	1 x TS 14.4	11.0	12.1	30.8	290	259	12.3	23.0	252	222	2 x TS 14.3	1 x TS 14.4	22.2	264	228	
1 x TS 14.3		5.1	6.2	30.8	275	255	6.4	23.0	238	218	1 x TS 14.3		22.2	249	225	
Pagrindas		Kryžiaus pavidalo pagrindas					Kryžiaus pavidalo pagrindas, mobilus									
5.6 x 5.6 x 1.2 m		FK 414			FK 514		FK 514									
Fiksavimo kampai		BF		BZ		BF		BZ		Vežimėlis, tiesus						
4 x FF 10/14		4 x 2.7 t		Blokas 5.0t		4 x 2.7 t		Blokas 5.0t 6.1t		F 320						

TS 14.3 = 5.9 m

TS 14.4 = 11.8 m

TSV 14.3 = 5.9 m

## SK 96/1 Spindulys ir galia

Strėlė	Maks. galia	Spindulys (m) ir galia (t)																
m	6.0 t	17	19	21	23	25	27	29	31	33	35	37	40	42	45	47	50	
L4	50.0	2.4 - 15.3 m	5.32	4.69	4.19	3.78	3.44	3.15	2.90	2.68	2.49	2.32	2.25	1.98	1.86	1.71	1.62	1.50
L3	45.0	2.4 - 16.6 m	5.84	5.15	4.60	4.16	3.78	3.46	3.19	2.95	2.75	2.57	2.40	2.19	2.07	1.90		
L2	40.0	2.4 - 17.9 m		5.61	5.01	4.53	4.12	3.78	3.48	3.23	3.03	2.81	2.63	2.40				
L1	35.0	2.4 - 18.4 m		5.78	5.17	4.67	4.25	3.90	3.60	3.33	3.10	2.90						

## Greičiai

FU 4-60/4		$v =$	80 m / min.	4.0 kW	400 V 50 Hz 3 Ph	
SR 5-90/3		$v = 0 \rightarrow$	25 m / min.	2 x 5.0 kW		
K SRA 55/3		$v = 0 \rightarrow$	0.75 min <sup>-1</sup>	2 x 4.4 kW		
<b>HK max. = 90 m</b> 2 padėtys						
Tipas			65 m / min 1 500 kg		32 m / min 3 000 kg	Bendras variklio galingumas (be SR 5-90/3) ~ 35 kW
PU 24-30/3			31 m / min 3 000 kg		16 m / min 6 000 kg	
24.0 kW			7 m / min		3 m / min	Prijungiamų įrengimų galia 180 kVA
<b>HK max. = 85 m</b> 2 padėtys						
Tipas						Bendras variklio galingumas (be SR 5-90/3) ~ 45 kW
FU 34-30/5						

## Atsvarai

Strėlė		L 1	L 2	L 3	L 4
Atsvarai	BG	10 650 kg	11 300 kg	11 300 kg	12 600 kg
	[t]	3 x 2.50	2 x 2.50	2 x 2.50	
		1 x 3.15	2 x 3.15	2 x 3.15	4 x 3.15