

KOBELCO Hydraulic Crawler Crane

7065 Specifications

Max. lifting capacity: 65 metric tons at 4.0 meters

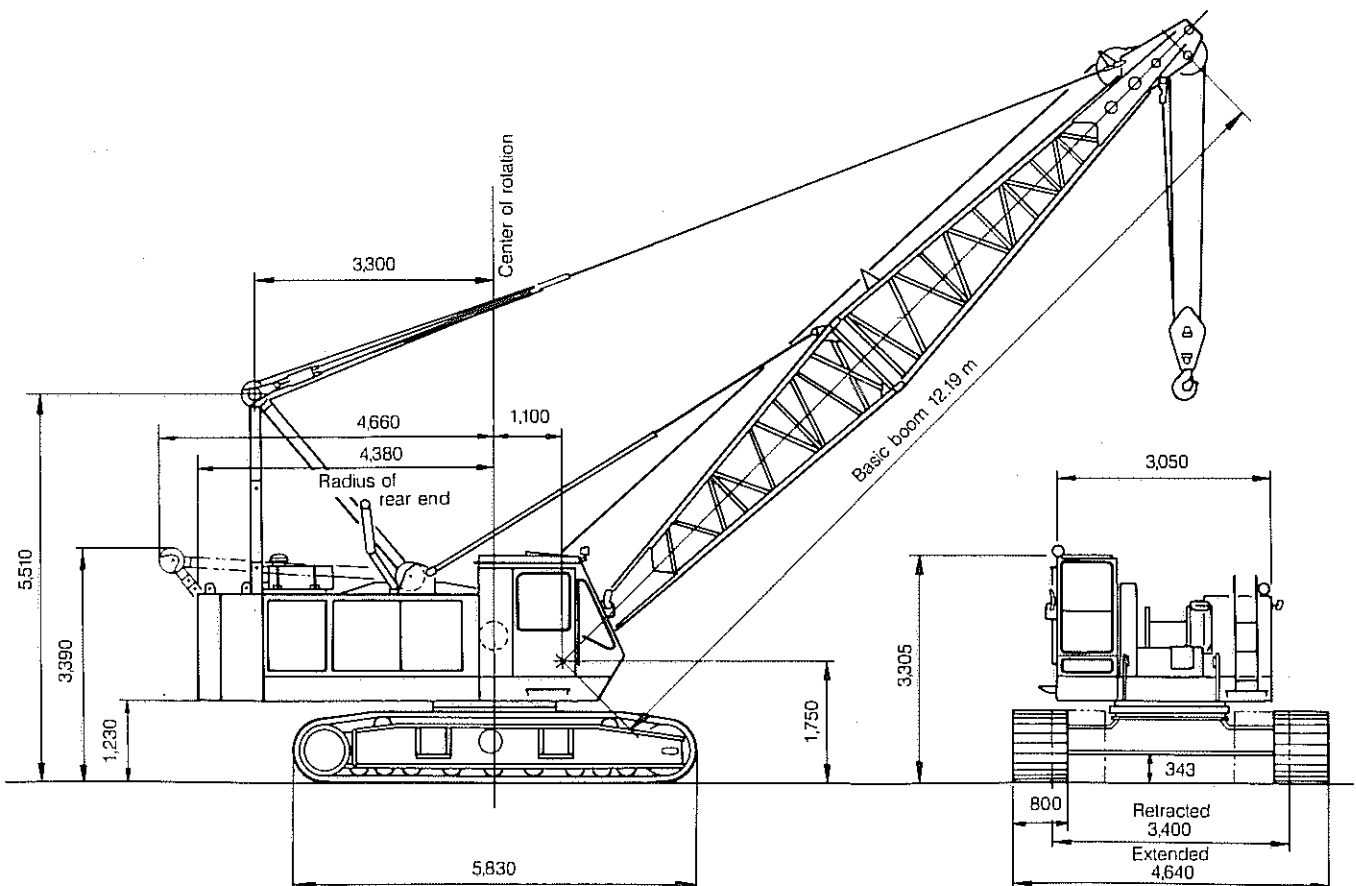
Max. boom length: 54.86 meters

Max. total length (boom + jib): 60.96 meters

- Tough winch that delivers extra lifting power
- Precise speed control for delicate inching operations
- Unrivaled fuel economy through a variable displacement hydraulic system
- Rationalized control layout for greater comfort and efficiency
- Lifetime floating seals and pre-lubricated bearings for maintenance-free operation

General Dimensions

Unit: mm



Boom Lifting Capacities

Rated Loads in Metric Tons for 360° Working Area

Unit: ton

Boom length m (ft) Operating radius (m)	12.19	15.24	18.29	21.34	24.38	27.43	30.48	33.53	36.58	39.62	42.67	45.72	48.77	51.82	54.86	Boom length m (ft) Operating radius (m)
	(40)	(50)	(60)	(70)	(80)	(90)	(100)	(110)	(120)	(130)	(140)	(150)	(160)	(170)	(180)	
4	65.0	63.1														4
4.5	53.7	53.6	53.2													4.5
5	44.8	44.7	44.6	43.9												5
5.5	38.4	38.2	38.1	38.0	37.2											5.5
6	33.5	33.4	33.3	33.2	33.1	32.2										6
7	26.7	26.6	26.4	26.4	26.3	26.2	26.1									7
8	22.1	22.0	21.8	21.7	21.7	21.6	21.5	21.4								8
9	18.9	18.7	18.6	18.5	18.4	18.3	18.2	18.1	18.0	17.9						9
10	16.4	16.2	16.1	16.0	15.9	15.8	15.7	15.7	15.6	15.5	15.4	15.3	15.2			10
12	13.3*	12.8	12.6	12.5	12.4	12.3	12.2	12.2	12.1	12.0	11.9	11.8	11.7	11.6		12
14			10.3	10.2	10.1	10.0	9.9	9.9	9.8	9.6	9.5	9.5	9.3	9.2	9.2	14
16			8.7	8.6	8.4	8.3	8.2	8.2	8.1	8.0	7.8	7.8	7.7	7.6	7.5	16
18				7.3	7.2	7.1	6.9	6.9	6.8	6.7	6.6	6.5	6.4	6.3	6.2	18
20				6.6**	6.2	6.1	6.0	6.0	5.9	5.7	5.6	5.6	5.4	5.3	5.2	20
22					5.5	5.4	5.2	5.2	5.1	5.0	4.8	4.7	4.6	4.5	4.4	22
24						4.8	4.6	4.5	4.4	4.3	4.2	4.1	4.0	3.9	3.8	24
26							4.1	4.0	3.9	3.8	3.7	3.6	3.4	3.3	3.2	26
28								3.6	3.5	3.4	3.2	3.1	3.0	2.9	2.8	28
30								3.2	3.1	3.0	2.8	2.7	2.6	2.5	2.4	30
32									2.8	2.7	2.5	2.4	2.3	2.2	2.0	32
34										2.4	2.2	2.1	2.0	1.8	1.7	34
36											2.0	1.9	1.7	1.5	1.4	36
38												1.7	1.6	1.4	1.3	38

* This figure applies to an operating radius of 11.8m.
 ** This figure applies to an operating radius of 19.9m.

Fixed Jib Lifting Capacities

Jib Rated Loads in Metric Tons for 360° Working Area

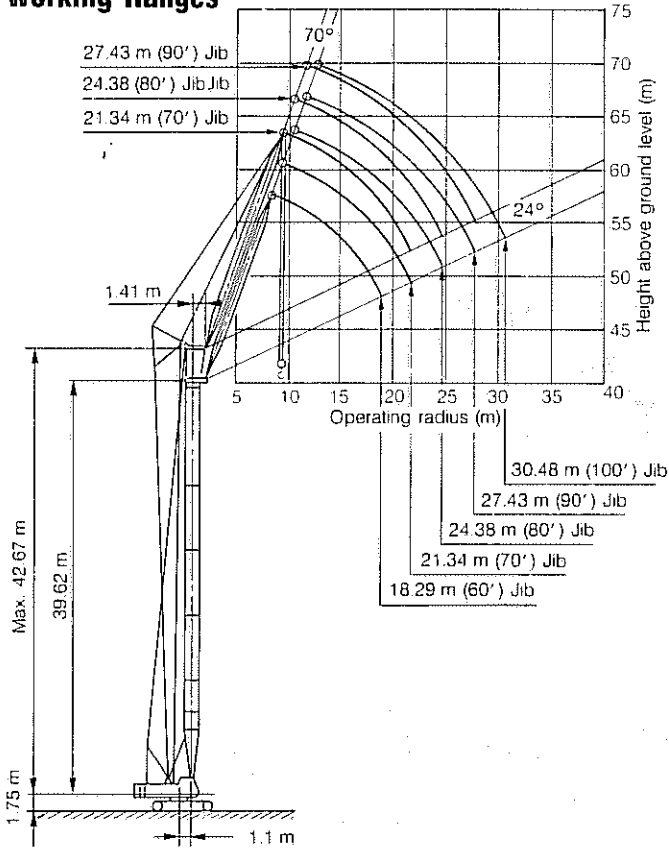
Unit: ton

Operating radius in meters	30.48m (100') Boom								33.53m (110') Boom								36.58m (120') Boom								Operating radius in meters	
	6.10 (20') Jib		9.14 (30') Jib		12.19 (40') Jib		15.24 (50') Jib		6.10 (20') Jib		9.14 (30') Jib		12.19 (40') Jib		15.24 (50') Jib		6.10 (20') Jib		9.14 (30') Jib		12.19 (40') Jib		15.24 (50') Jib			
	Offset Angle				Offset Angle				Offset Angle				Offset Angle				Offset Angle				Offset Angle					
	10°	30°	10°	30°	10°	30°	10°	30°	10°	30°	10°	30°	10°	30°	10°	30°	10°	30°	10°	30°	10°	30°	10°	30°		
8	65																								8	
9	65								65								65								9	
10	65	65	65						65	65	65					65	65	65							10	
12	65	65	65	60	60			5.2		6.5	6.5	6.5		6.0		5.2		6.5	6.5	6.5		6.0		5.2	12	
14	66	65	65	60	60	4.3	5.2			6.5	6.5	6.5	6.0	6.0		5.2		6.5	6.5	6.5	6.0	6.0		5.2	14	
16	65	65	65	60	60	4.3	5.2	3.7		6.5	6.5	6.5	6.0	6.0	4.3	5.2		6.5	6.5	6.5	6.0	6.0	4.3	5.2	16	
18	65	65	65	60	60	4.3	5.2	3.7		6.5	6.5	6.5	6.0	6.0	4.3	5.2	3.7	6.5	6.5	6.5	6.0	6.0	4.3	5.2	3.7	18
20	60	60	60	60	60	4.3	5.2	3.7		6.0	6.0	6.0	6.0	6.0	4.3	5.2	3.7	5.9	5.9	5.9	5.9	5.9	4.3	5.2	3.7	20
22	5.2	5.2	5.2	5.2	5.2	4.3	5.2	3.7		5.2	5.2	5.2	5.2	5.2	4.3	5.2	3.7	5.1	5.1	5.1	5.1	5.1	4.3	5.1	3.7	22
24	4.6	4.6	4.6	4.6	4.6	4.3	4.6	3.7		4.5	4.5	4.5	4.5	4.5	4.3	4.5	3.7	4.4	4.4	4.4	4.4	4.4	4.3	4.4	3.7	24
26	4.1	4.1	4.1	4.1	4.1	4.1	4.1	3.7		4.0	4.0	4.0	4.0	4.0	4.0	4.0	3.7	3.9	3.9	3.9	3.9	3.9	3.9	3.9	3.7	26
28										3.6	3.6	3.6	3.6	3.6	3.6	3.6		3.5	3.5	3.5	3.5	3.5	3.5	3.5	3.5	28
30										3.2	3.2	3.2	3.2	3.2	3.2	3.2		3.1	3.1	3.1	3.1	3.1	3.1	3.1	3.1	30
32																		2.8	2.8	2.8	2.8	2.8	2.8	2.8	2.8	32

Operating radius in meters	42.67m (140') Boom								45.72m (150') Boom								Operating radius in meters
	6.10 (20') Jib		9.14 (30') Jib		12.19 (40') Jib		15.24 (50') Jib		6.10 (20') Jib		9.14 (30') Jib		12.19 (40') Jib		15.24 (50') Jib		
	Offset Angle				Offset Angle				Offset Angle				Offset Angle				
	10°	30°	10°	30°	10°	30°	10°	30°	10°	30°	10°	30°	10°	30°	10°	30°	
10	65																10
12	65	65	65						6.5							6.5	12
14	65	65	65	60	60				6.5	6.5	6.5				6.0	5.2	14
16	65	65	65	60	60	4.3	5.2		6.5	6.5	6.5	6.0	6.0		5.2		16
18	65	65	65	60	60	4.3	5.2	3.7	6.5	6.5	6.5	6.0	6.0	4.3	5.2	3.7	18
20	5.6	5.6	5.6	5.6	5.6	4.3	5.2	3.7	5.6	5.6	5.6	5.6	5.6	4.3	5.2	3.7	20
22	4.8	4.8	4.8	4.8	4.8	4.3	4.8	3.7	4.7	4.7	4.7	4.7	4.7	4.3	4.7	3.7	22
24	4.2	4.2	4.2	4.2	4.2	4.2	4.2	3.7	4.1	4.1	4.1	4.1	4.1	4.1	4.1	3.7	24
26	3.7	3.7	3.7	3.7	3.7	3.7	3.7	3.7	3.6	3.6	3.6	3.6	3.6	3.6	3.6	3.6	26
28	3.2	3.2	3.2	3.2	3.2	3.2	3.2	3.2	3.1	3.1	3.1	3.1	3.1	3.1	3.1	3.1	28
30	2.8	2.8	2.8	2.8	2.8	2.8	2.8	2.8	2.7	2.7	2.7	2.7	2.7	2.7	2.7	2.7	30
32	2.5	2.5	2.5	2.5	2.5	2.5	2.5	2.5	2.4	2.4	2.4	2.4	2.4	2.4	2.4	2.4	32
34	2.2	2.2	2.2	2.2	2.2	2.2	2.2	2.2	2.1	2.1	2.1	2.1	2.1	2.1	2.1	2.1	34
36	2.0	2.0	2.0	2.0	2.0	2.0	2.0	2.0	1.9	1.9	1.9	1.9	1.9	1.9	1.9	1.9	36
38	1.7	1.7	1.7	1.7	1.7	1.7	1.7	1.7	1.6	1.6	1.6	1.6	1.6	1.6	1.6	1.6	38

Luffing Jib

Working Ranges



Rated Loads in Metric Tons for 360° Working Area

Unit: ton

Lower boom length (m)	21.34-39.62 (70-130)	24.38-42.67 (80-140)	27.43-42.67 (90-140)	30.48-42.67 (100-140)	33.53-39.62 (110-130)
Jib length (m)	18.29 (60)	21.34 (70)	24.38 (80)	27.43 (90)	30.48 (100)
Operating radius (m)	10.5	12.0	12.0	11.0	9.4
12	12.0	12.0			
13	11.1	11.1	11.0		
14	10.2	10.2	10.2	9.4	
15	9.4	9.4	9.4	9.0	7.8
16	8.7	8.7	8.7	8.7	7.6
18	7.5	7.5	7.5	7.5	7.0
20	7.0*	6.5	6.5	6.5	6.5
22		5.6	5.6	5.6	5.6
24			4.9	4.9	4.9
26			4.7**	4.2	4.2
28				3.9***	3.6
30					3.1

Note: Major precautions for this model are identical to those for 7065 crawler crane.

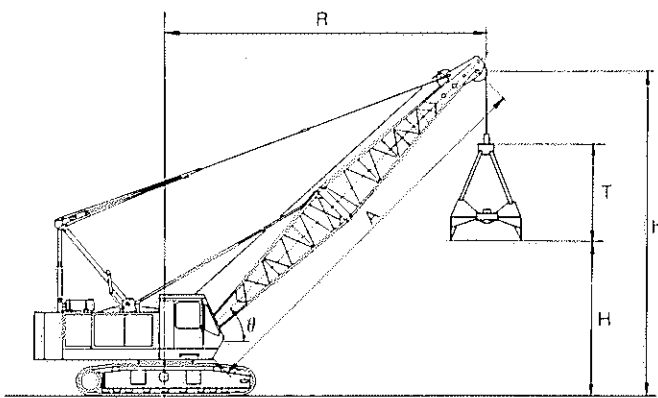
- * This figure applies to an operating radius of 19 m.
- ** This figure applies to an operating radius of 24.5 m.
- *** This figure applies to an operating radius of 27 m.

Clamshell

Clamshell Ratings and Working Ranges

A Boom length (m)		12.19				15.24				18.29					
θ	Boom angle (°)	35	45	55	65	35	45	55	65	35	45	55	65		
R	Working radius (m)	11.5	10.1	8.5	6.7	14.0	12.3	10.3	8.0	16.0 (376°)	14.5	12.0	9.3		
H	Height at bucket opening	Bucket capacity	0.8m³	2.7	4.3	5.7	6.8	4.4	6.5	8.2	9.5	6.2	8.6	10.7	12.3
			1.0m³	2.7	4.3	5.7	6.8	4.4	6.5	8.2	9.5	6.2	8.6	10.7	12.3
			1.2m³	2.3	3.9	5.3	6.4	4.0	6.1	7.8	9.1	5.8	8.2	10.3	11.9
			1.6m³	2.4	4.0	5.4	6.5	4.1	6.2	7.9	9.2	5.9	8.3	10.4	12.0
h	Boom point height (m)	8.5	10.2	11.6	12.7	10.3	12.4	14.1	15.5	12.7	14.5	16.6	18.2		
Rated loads (ton)		5.5				5.5				5.5					

Dimensions



T: Bucket clearance

Clamshell Buckets

Capacity (m³)	Approximate weight (kg)	Bucket clearance (m)
0.8	2,100	3.3
1.0	2,500	3.3
1.2	3,100	3.7
1.6	2,000	3.6

Boom Component Chart

Boom length (m)	Boom arrangement
15.24	Base-A-Tip
18.29	Base-B-Tip

Base = 610 m Tip = 610 m Inserts: A = 305 m, B = 610 m

Note:

- 1) Bucket weight must not exceed 3.1 tons.
- 2) The 1.6 m³ bucket is for loading operations.
- 3) Clamshell ratings also apply to grapple and all other material-handling buckets except dragline.
- 4) For clamshell operations, bucket weight is considered part of the load and the total bucket weight plus contents must not exceed the corresponding rating shown.
- 5) Ratings assume the use of a KOBELCO boom.